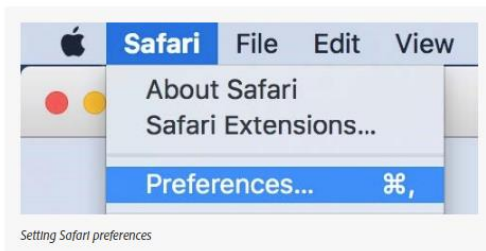


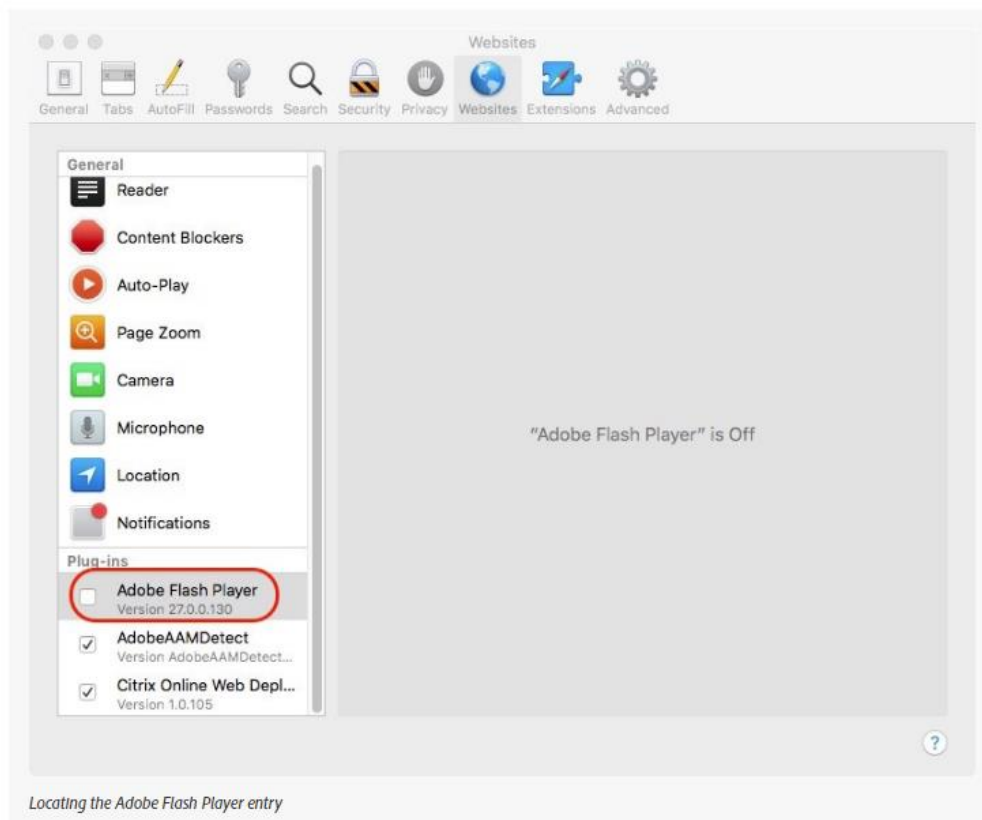
If you are using DORA, ADAM, DOMA or Edge on Safari and Adobe Flash is not working or the assessment is not displaying, follow the below instructions. Be sure you have the most recent version of Safari installed.

For Mac OS X 10.11, macOS 10.12, and later

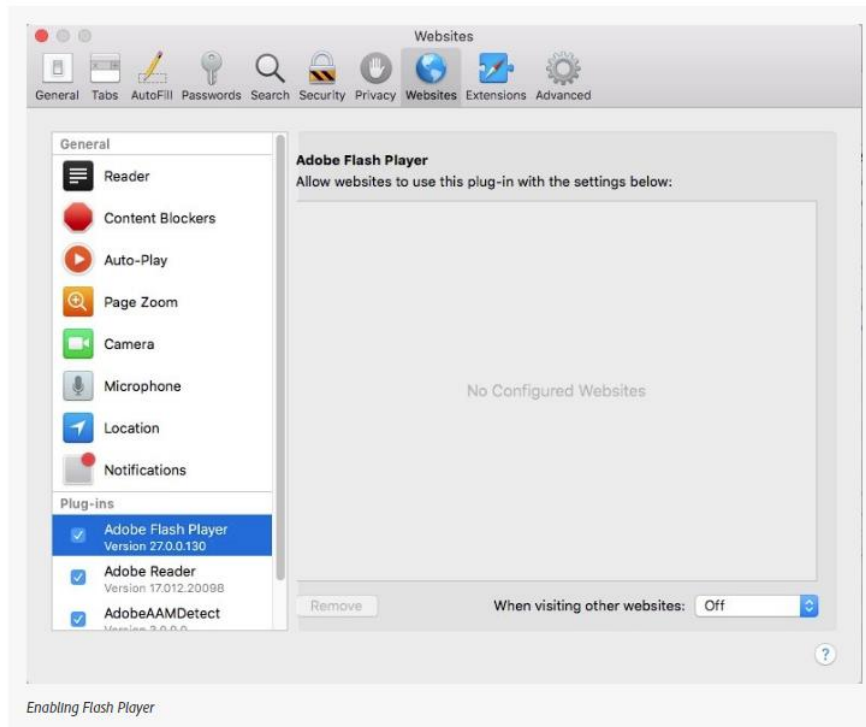
- 1 Open Safari, and choose **Safari > Preferences**.



- 2 Click the **Websites** tab and scroll down to the **Plug-ins** section. Locate the **Adobe Flash Player** entry.

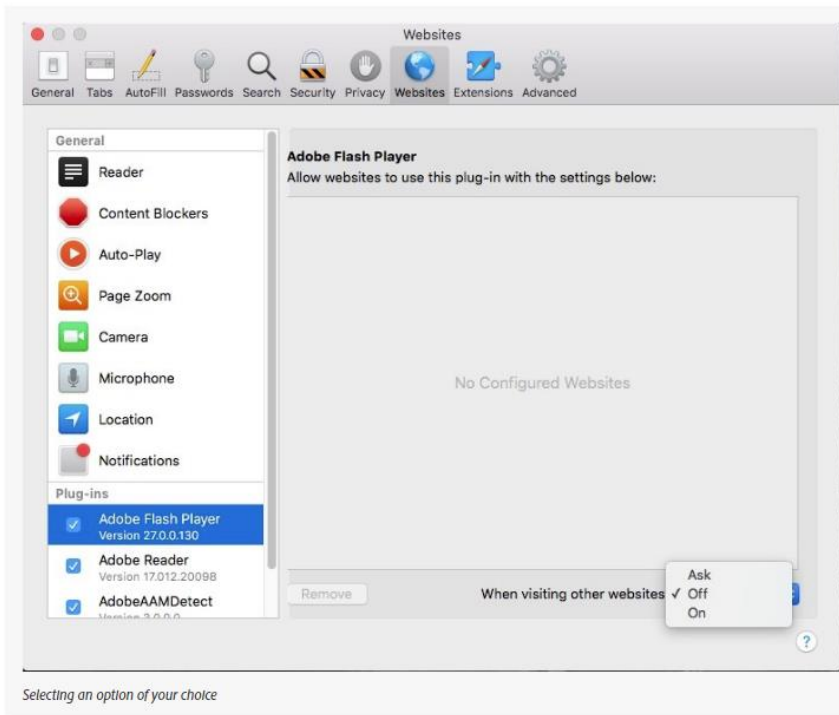


- 3 Click the check box to enable Flash Player.

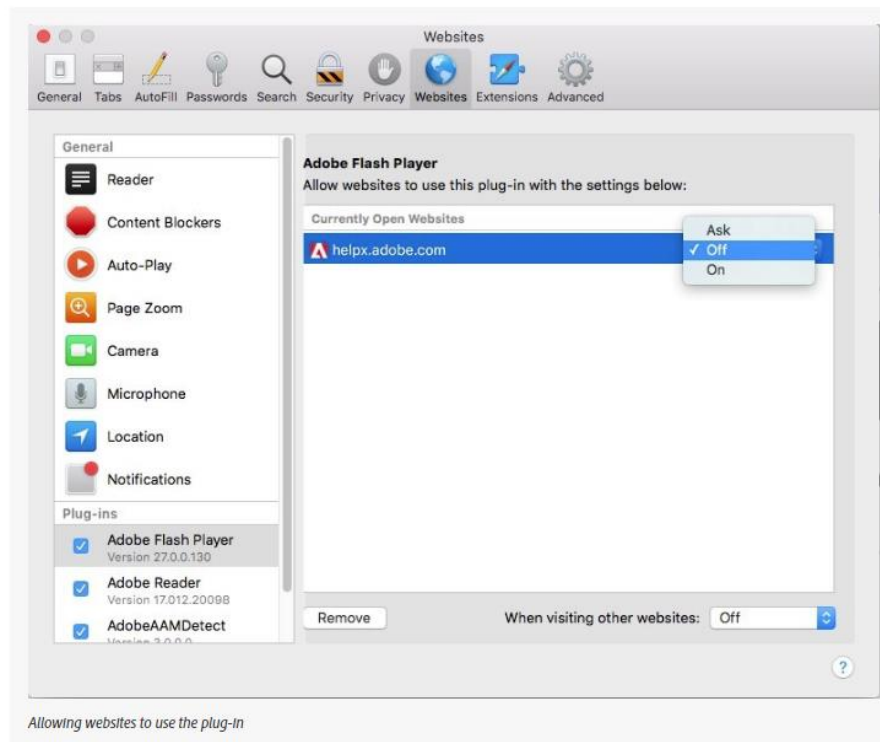


4. Select "Ask" or "On" for When visiting other websites.

- 4 Select a setting to use for Flash Player when you visit other websites.



- 5 You can configure Flash for individual websites (domains). Select a website listed in this window, and choose Ask, Off, or On.





- 6 Exit **Preferences** after you finish configuring Flash Player.